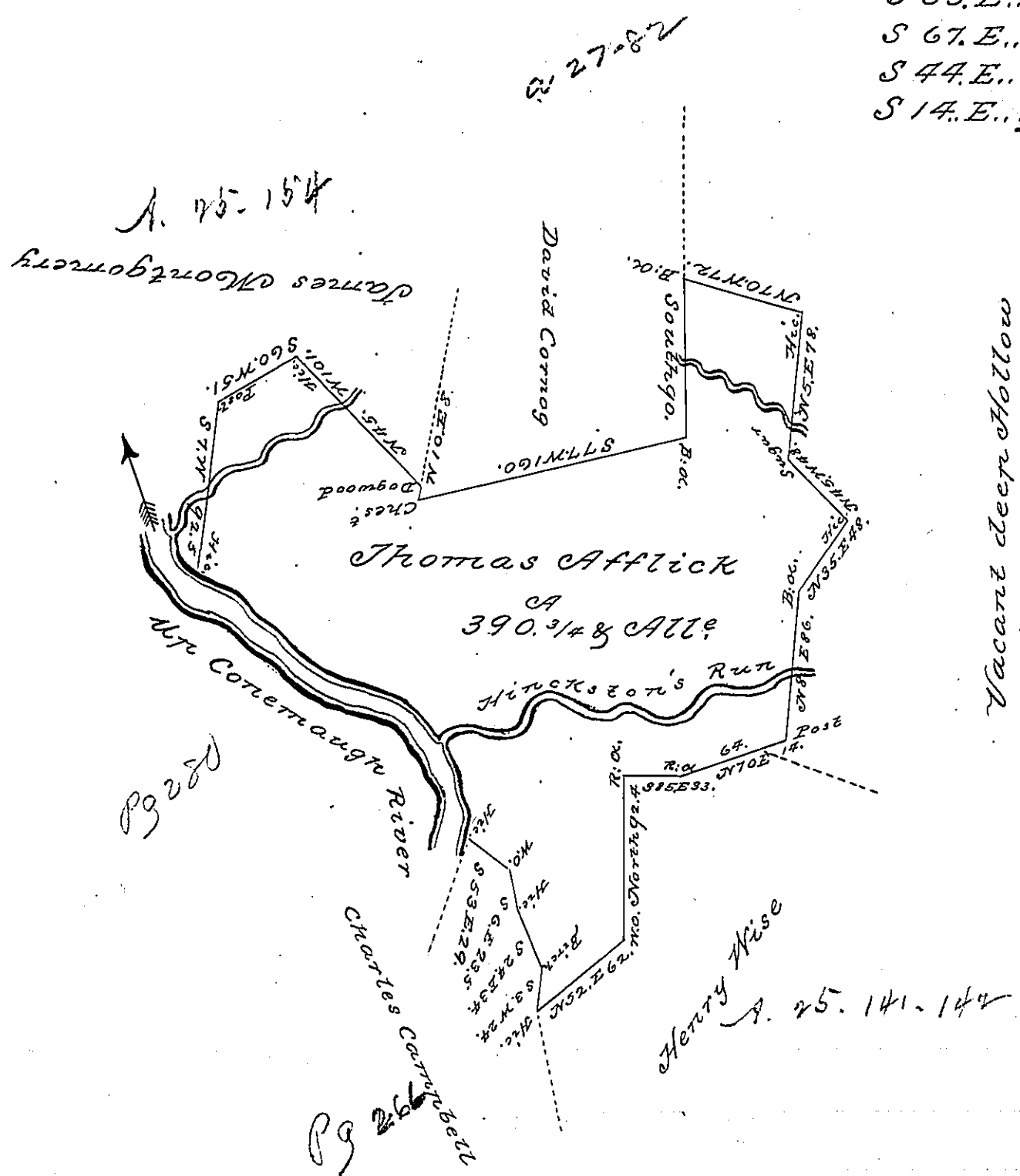


Courses & Distances
 up Conemaugh from Hic
 S 53. E.... 93 perches
 S 67. E.... 52... 2°
 S 44. E.... 32... 2°
 S 14. E.... 53 to Hic.
 230.



Situated on the North side of Conemaugh River including the Mouth of Hinckston's Run in Duermahoning Township Bedford County and Surveyed the 17th day of June 1788. In pursuance of a Warrant dated the 12th day of March 1785.

George Woods D. S.
 To John Lukens Esqr. S. G.

IN TESTIMONY that the above is a copy of the original remaining on file in the Department of Internal Affairs of Pennsylvania, made conformably to an Act of Assembly approved the 16th day of February, 1833, I have hereunto set my Hand and caused the Seal of said Department to be affixed at Harrisburg, this

second day of March 1897

James W. Fatta
 Secretary of Internal Affairs.